

PART OF S.E. 1/4 OF S.W. 1/4 OF SECTION 16, T.6N., R.1W., S.L.B. & M.

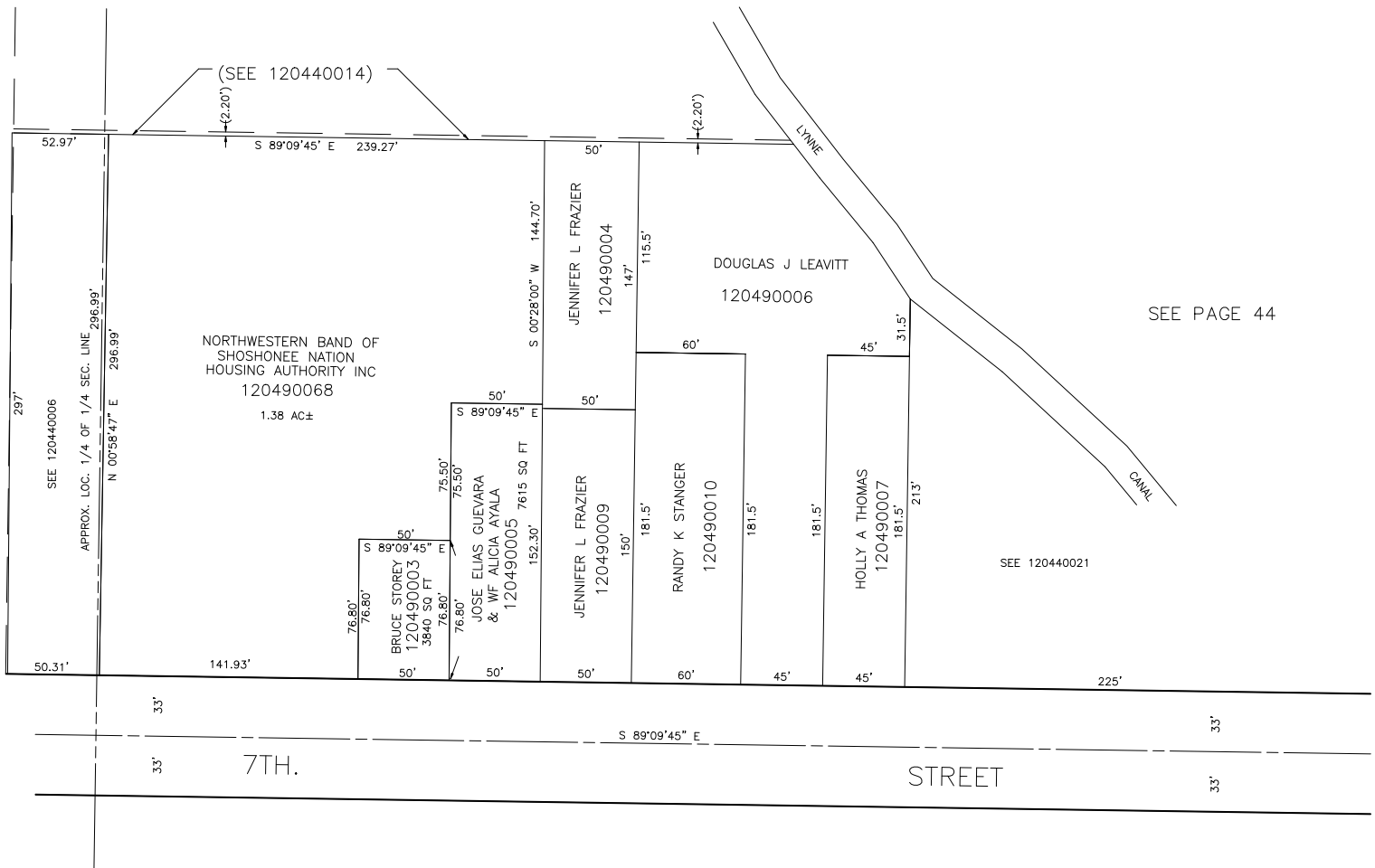
IN OGDEN CITY
SCALE 1" = 50'

PREFIX: 12-049

TAXING UNIT: 25

SEE PAGE 44

SEE PAGE 46-2



SEE PAGE 49-3